

# Birdzoff Pyramid™



Stainless steel mesh and frame and hot dipped galvanized hardware prevents large birds from building nests and perching

- Targets **Bald Eagles** and **Osprey**
- Communication towers
- Easily installed without additional crane or lift
- Minimal wind/ice load
- Can be customized to fit on top of any tower

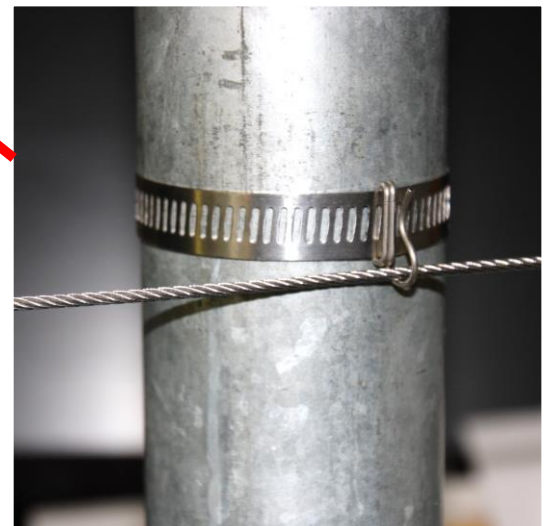
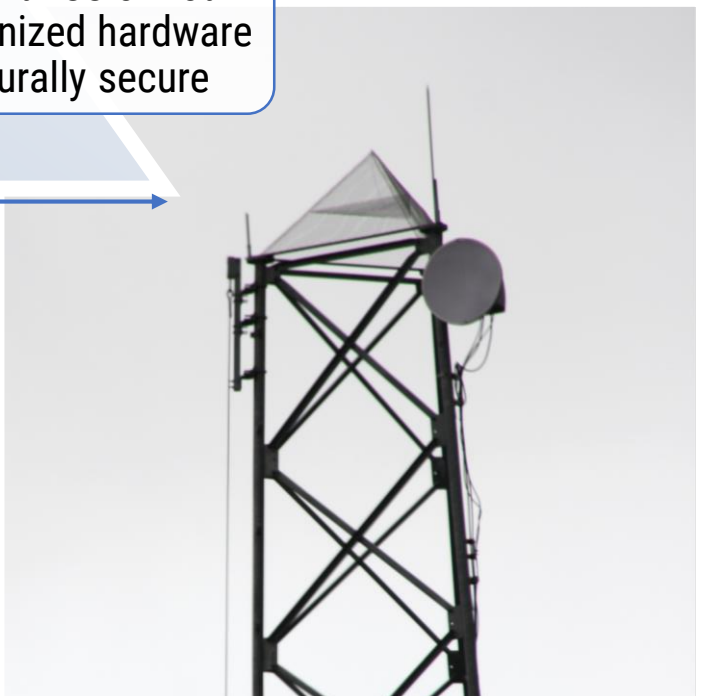
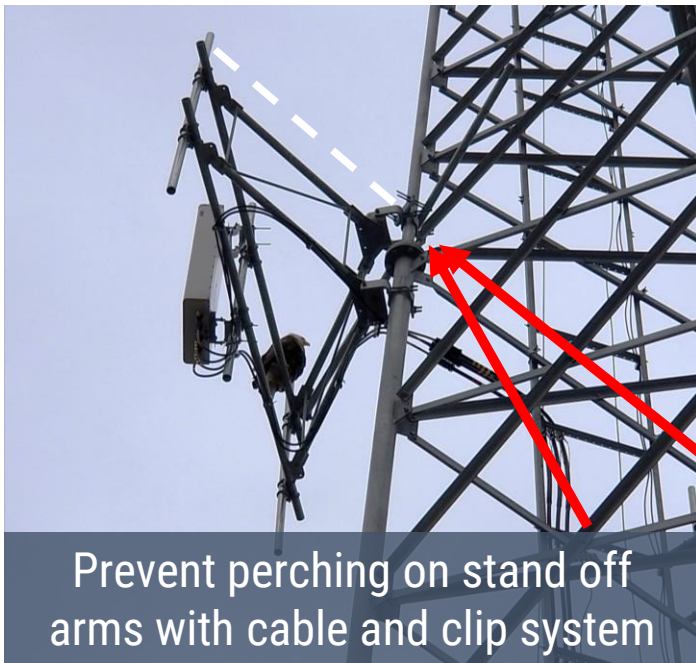
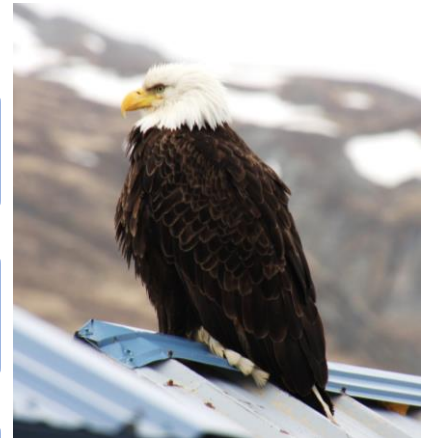
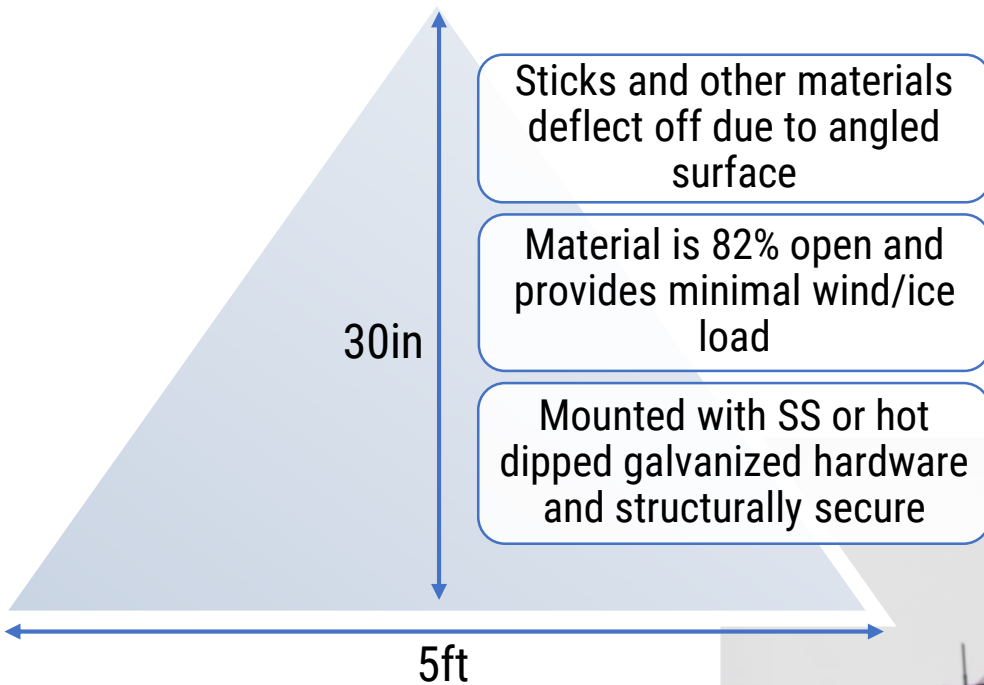


Tower location: Dutch Harbor, Alaska



birdzoff.com  
818.421.3692  
[ggsabine@gmail.com](mailto:ggsabine@gmail.com)

# Birdzoff Pyramid™



- Cable runs above stand off arms and horizontal antenna mount pipes
- Custom clip design captures cable
- Quick and easy r/r of cable for installation and maintenance